

# Anagram Sofa

Panter&Tourron, 2024

**vitra.**





'Anagram is not just a comfortable sofa.  
It is a flexible lounge system that  
can be easily adapted to changing needs  
within seconds.'

Panter&Tourron

# Anagram Sofa

Panter&Tourron, 2024



Anagram is more than just a sofa: it is a family made up of a few modules and elements that can be used to quickly respond to the needs of the moment as well as major life changes.

The Anagram platform modules are designed as islands that can be combined with other modules on all four sides and fitted with elements such as backrests, side panels and attachable tables. Thanks to an ingenious click mechanism, these elements can be freely positioned anywhere on the platform and rearranged in a matter of seconds. This allows for countless configurations and easy layout changes – from a classic L-shaped sofa or small reading nook to a practical sleeping area for guests, from a flat island-like meeting point in the centre of the room or formal waiting area to an

S-shaped configuration promoting communication or a cosy retreat and many other possibilities.

The soft comfortable cushions are filled with 100% recycled PET fibres and contain zero animal-based padding. The fabric covers are easy to remove for cleaning or replacement. The robust, lightweight frame is made of aluminium with 80% recycled content and, like all Anagram components, is separate from other materials – nothing is glued, laminated or foamed. This means that the individual components, which are manufactured from recycled materials wherever possible, can be easily separated at the end of the product's life and recycled again

Anagram is the sofa solution that cleverly embodies current lifestyle changes. This is achieved through its comfort and engineering, functionality and aesthetics: the same hallmarks that typify all Vitra products.



## Panter&Tourron

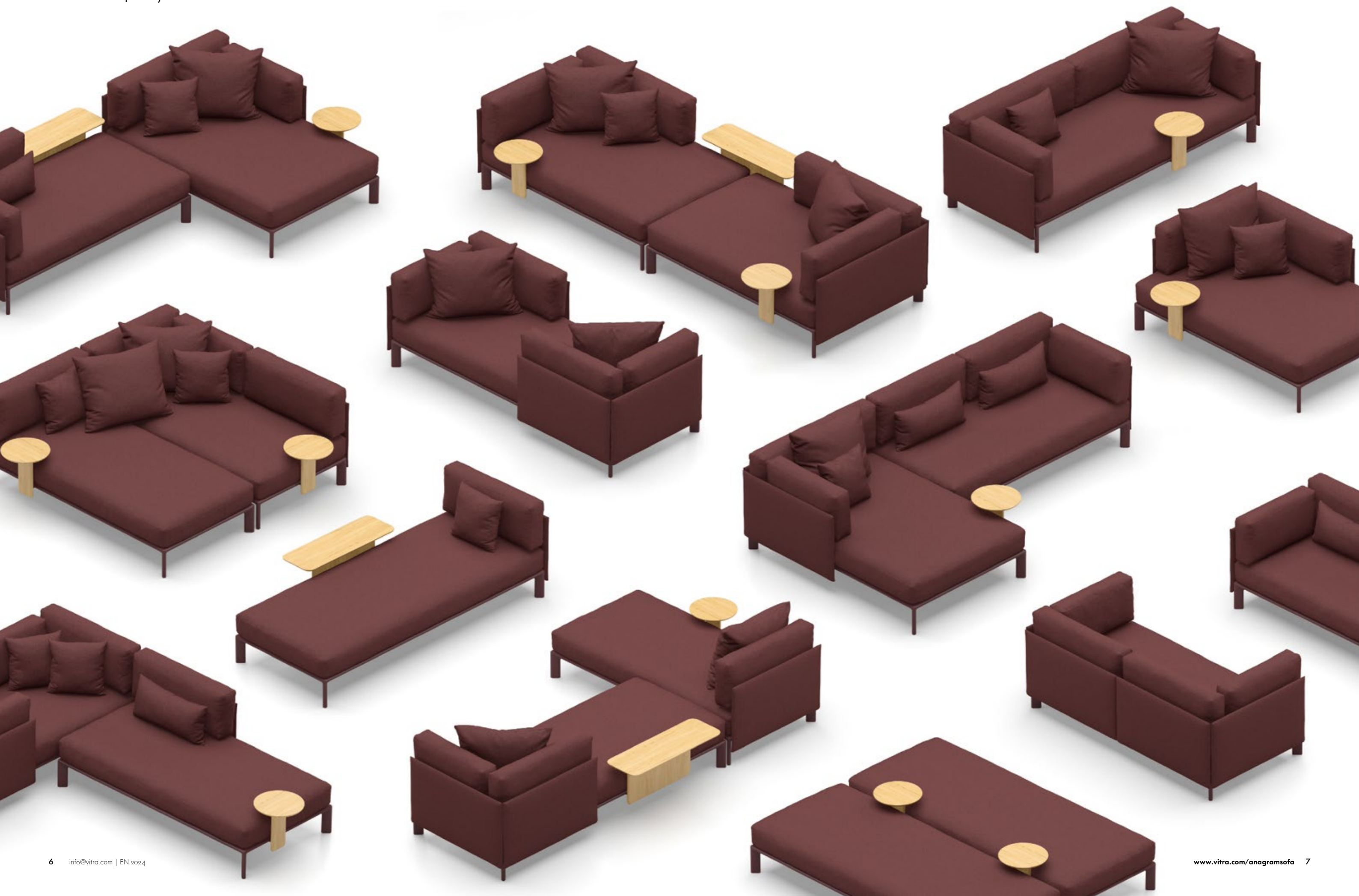
Stefano Panterotto and Alexis Tourron met while studying at the 'École cantonale d'art de Lausanne' (ECAL) – a university of art and design. They founded their own studio together in Lausanne in 2016, developing products and visual experiences at the intersection of design, technology and society. They have been collaborating with Vitra since 2023.

1-5	Anagram Sofa	33	Seat upholstery and back cushions	40-49	Vitra Cushions
6-27	Click & play	34-35	Panels and cushions, spare parts	52-71	Colours and materials
28-29	Connecting modules	36	Environmental information	72-73	Dimensions
30-31	Renew & exchange	37	Certificates		
32	Body and legs	38-39	Sink in & relax		



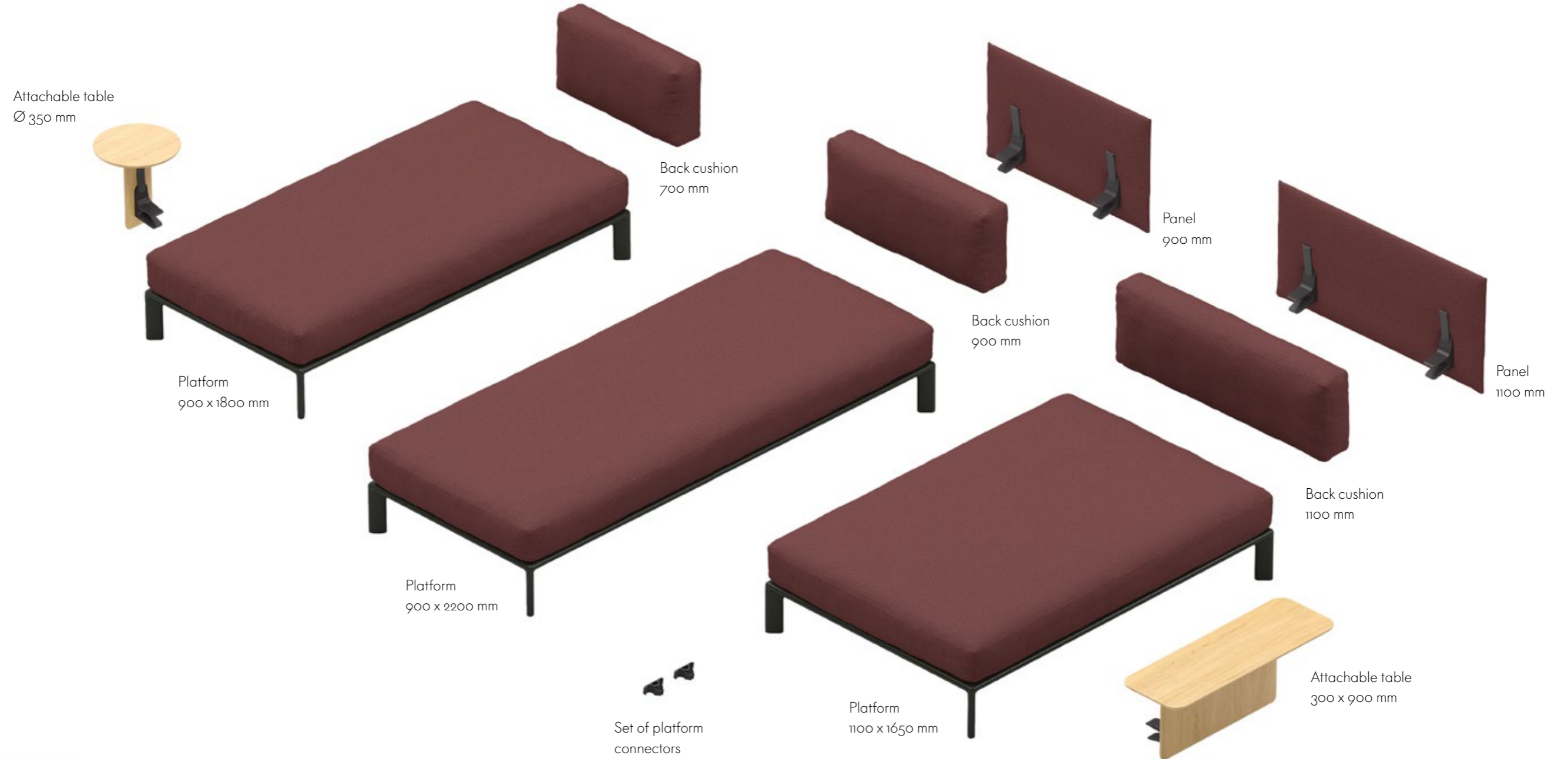
Click & play

vitra.



# Just a few parts, yet countless possibilities

With a choice of just 11 different components – modules and elements – it is possible to assemble the appropriate configuration for a wide range of requirements: small, large, single-sided, double-sided, alternate-sided, closed, open, etc. And when the needs change, Anagram can be easily adapted to the new situation.



**3 platforms**

- Platform 900 x 1800 mm
- Platform 900 x 2200 mm
- Platform 1100 x 1650 mm



**3 back cushions**

- Back cushion 1100 mm
- Back cushion 900 mm
- Back cushion 700 mm



**2 panels**

- Panel 1100 mm
- Panel 900 mm



**2 attachable tables**

- Attachable table Ø 300 mm
- Attachable table 300 x 900 mm



**Platform connectors**

## Technical features

The platform modules are designed as islands that can be combined with other modules on all four sides and fitted with elements such as backrests, side panels and attachable tables.

### 360° platform

Adaptable to every need



### Linking elements

The platform modules can be combined with other modules on all four sides. Platform connectors ensure stability and correct spacing between individual units.



## Click mechanism

Thanks to an ingenious click mechanism, panels and attachable tables can be freely positioned anywhere on the platform and rearranged in a matter of seconds.

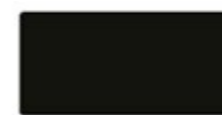


# Click & play: Platform module 900 x 1800 mm

The platform measuring 900 x 1800 mm can serve as a classic two-seater sofa. Thanks to freely positionable panels and attachable tables, it can also be used as an open sofa with a small table, as a narrow chaise longue or as a daybed.



The following are the maximum number of elements used in these configurations:



Platform 900 x 1800 mm



2 back cushions 900 mm  
2 back cushions 700 mm



4 panels 900 mm



1 attachable table  
300 x 900 mm  
1 attachable table  
Ø 300 mm

# Click & play: Two platform modules 900 x 1800 mm

Two platform modules 900 x 1800 mm can be combined as required on any of the four sides using connectors: possible configurations range from a long sofa or L-shaped configuration to a double chaise longue for watching TV or a platform with 360° accessibility for use as an island-like meeting point in the centre of the room.

The addition of attachable tables between the cushions can also create a fresh new look.



The following are the maximum number of elements used in these configurations:



2 platforms 900 x 1800 mm



4 back cushions 900 mm  
2 back cushions 700 mm



6 panels 900 mm



1 attachable table  
300 x 900 mm  
1 attachable table  
Ø 300 mm

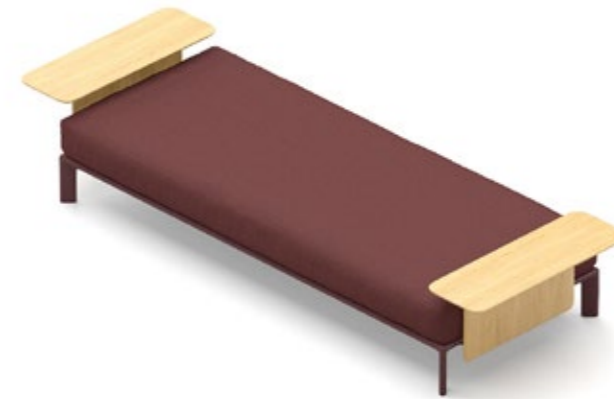


Platform  
connectors



# Click & play: Platform module 900 x 2200 mm

The platform module 900 x 2200 mm seats three people. The use of freely positionable panels and attachable tables enables a diverse variety of options, from a classic sofa configuration, open on one or both sides with a table element, to a chaise longue or an open platform with no back or side panels for use as an island in the centre of a room.



The following are the maximum number of elements used in these configurations:



Platform 900 x 2200 mm



2 back cushions 1100 mm  
2 back cushions 700 mm



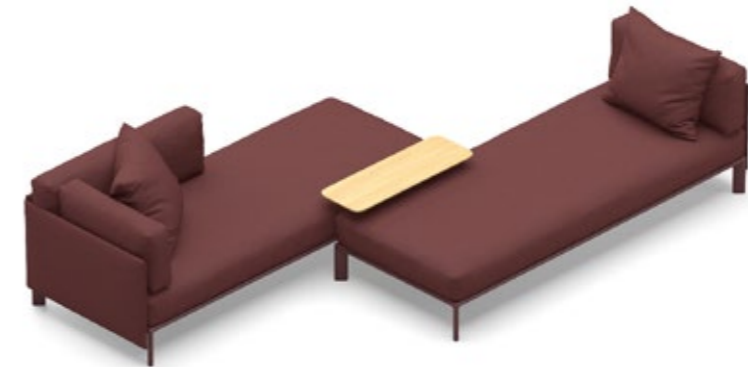
2 panels 1100 mm  
2 panels 900 mm



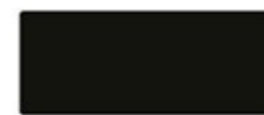
2 attachable tables  
300 x 900 mm  
2 attachable tables  
Ø 300 mm

# Click & play: Two platforms 900 x 2200 mm

If two 900 x 2200 mm platform modules are joined on any side using the connecting elements, panels and attachable tables can be added anywhere along the frame to suit the needs of the moment – whether as a classic L-shaped sofa, a long bench that can be used on either side, two opposite-facing chaises longues or as a platform on which the whole family can recline.



The following are the maximum number of elements used in these configurations:



2 platforms  
900 x 2200 mm



4 back cushions 1100 mm  
2 back cushions 700 mm



4 panels 1100 mm  
2 panels 900 mm



2 attachable tables  
300 x 900 mm  
2 attachable tables  
Ø 300 mm



Platform  
connectors

## Click & play: Platform module 1100 x 1650 mm

The platform 1100 x 1650 mm is the standard module for a chaise longue thanks to its extra depth. As with all Anagram modules, it is possible to fit panels and attachable tables on all four sides and connect it to other platform modules.



## Click & play: Combinations with platform 1100 x 1650 mm

Platform module 1100 x 1650 mm serves as a basis for L-shaped configurations with a chaise longue – which can be fitted on the left or right as required.



L-shaped configuration comprising 900 x 1800 mm and 1100 x 1650 mm platforms



L-shaped configuration comprising 900 x 2200 mm and 1100 x 1650 mm platforms



L-shaped configuration comprising 900 x 2200 mm and 1100 x 1650 mm platforms

The following are the maximum number of elements used in these configurations:



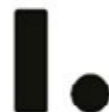
2 platforms 1100 x 1650 mm



2 back cushions 1100 mm  
2 back cushions 700 mm



2 panels 1100 mm  
2 panels 900 mm



1 attachable table  
300 x 900 mm  
1 attachable table  
Ø 300 mm



Platform  
connectors

# Click & play: Combinations with platform 1100 x 1650 mm

By combining the module with other platforms, it is possible to create inviting sofa landscapes that can be quickly and easily adapted to the needs of the moment.



L-shaped configuration comprising 900 x 1800 mm and 1100 x 1650 mm platforms



L-shaped configuration comprising 900 x 2200 mm and 1100 x 1650 mm platforms



L-shaped configuration comprising 900 x 2200 mm and 1100 x 1650 mm platforms



L-shaped configuration comprising 900 x 2200 mm and 1100 x 1650 mm platforms



Sofa landscape comprising two 900 x 1800 mm and one 1100 x 1650 mm platforms



Sofa landscape comprising two 900 x 1800 mm and one 1100 x 1650 mm platforms

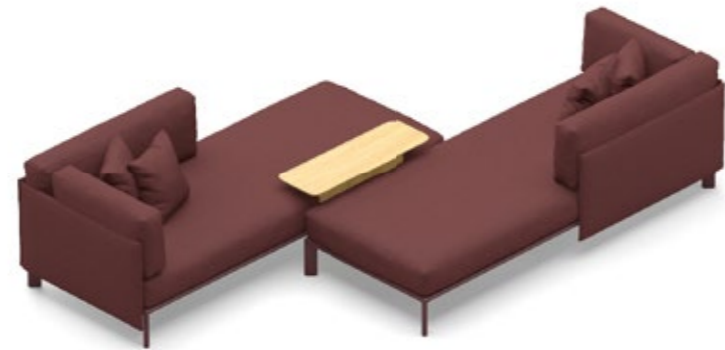
# Click & play: Islands and sofa landscapes

Inspirations for Anagram configurations in spaces such as waiting areas, communication zones, office lounges, etc.

Sofa landscape comprising two 900 x 1800 mm platforms



Sofa landscape comprising two 900 x 1800 mm and one 900 x 2200 mm platforms



Sofa landscape comprising three 900 x 1800 mm platforms



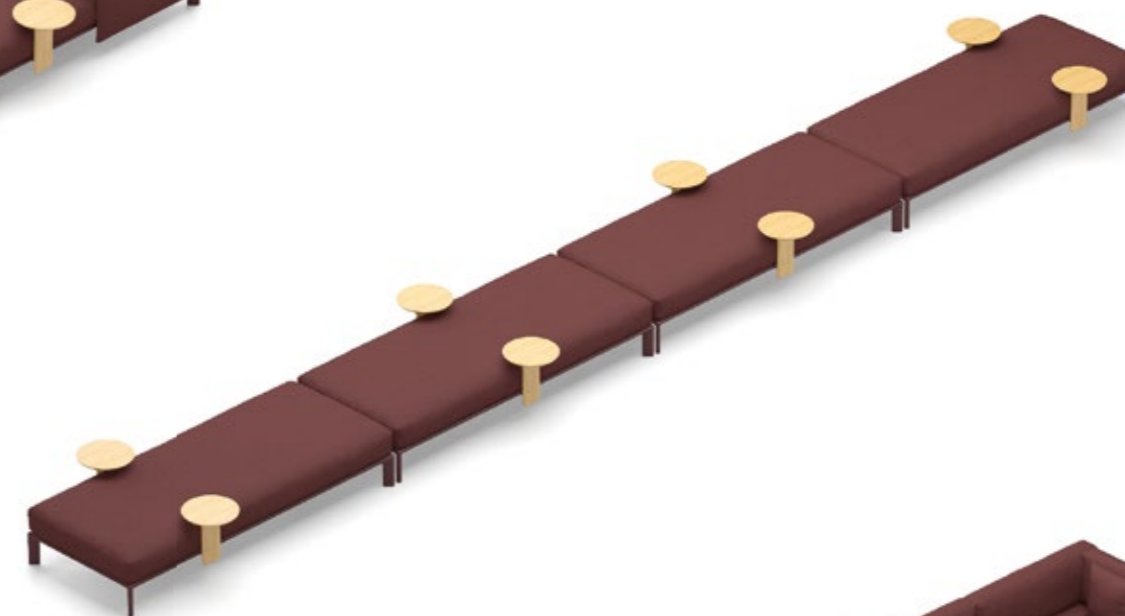
# Click & play: Islands and sofa landscapes

All Anagram platform modules can be freely combined. When used in office settings, preference should be given to the platform 1100 x 1650 mm with its wider seat depth (1100 mm).

Sofa landscape comprising four 900 x 2200 mm platforms



Sofa landscape comprising four 900 x 2200 mm platforms



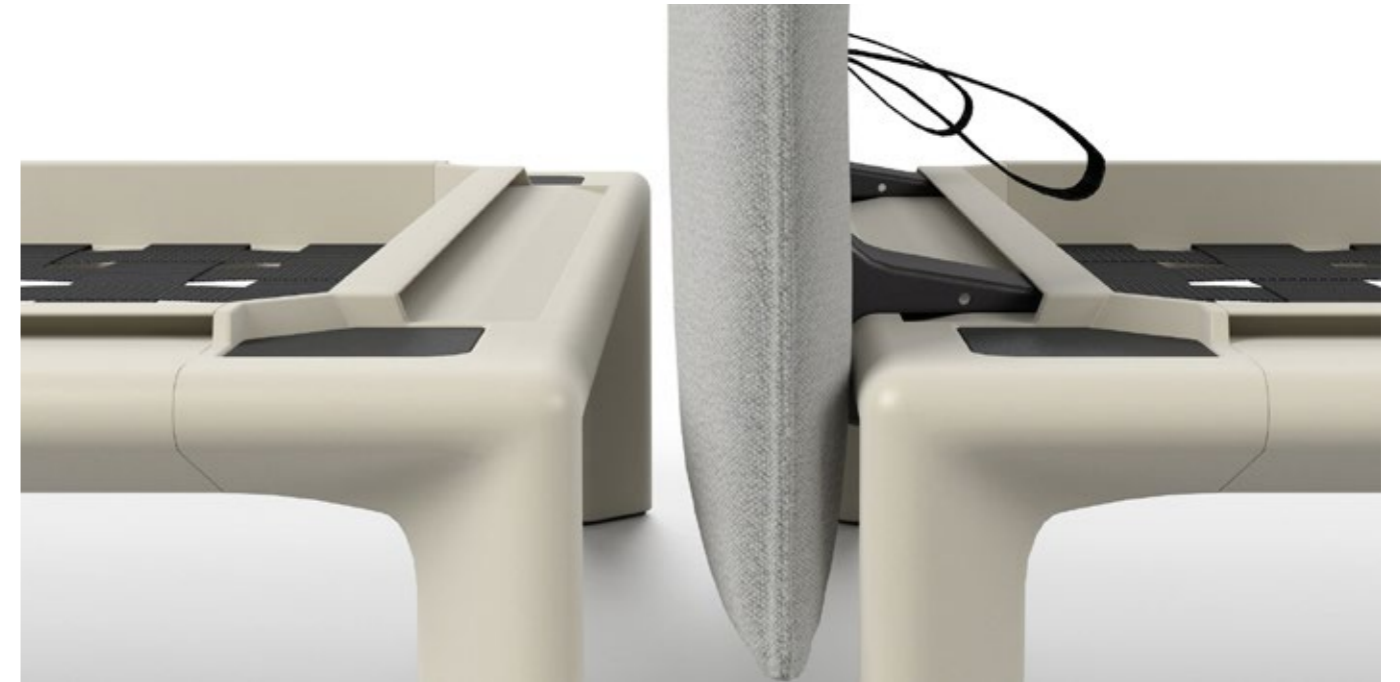
Sofa landscape comprising two 900 x 2200 mm and two 1100 x 1650 mm platforms

## Connecting modules

Please observe the following information regarding the connection of platforms.



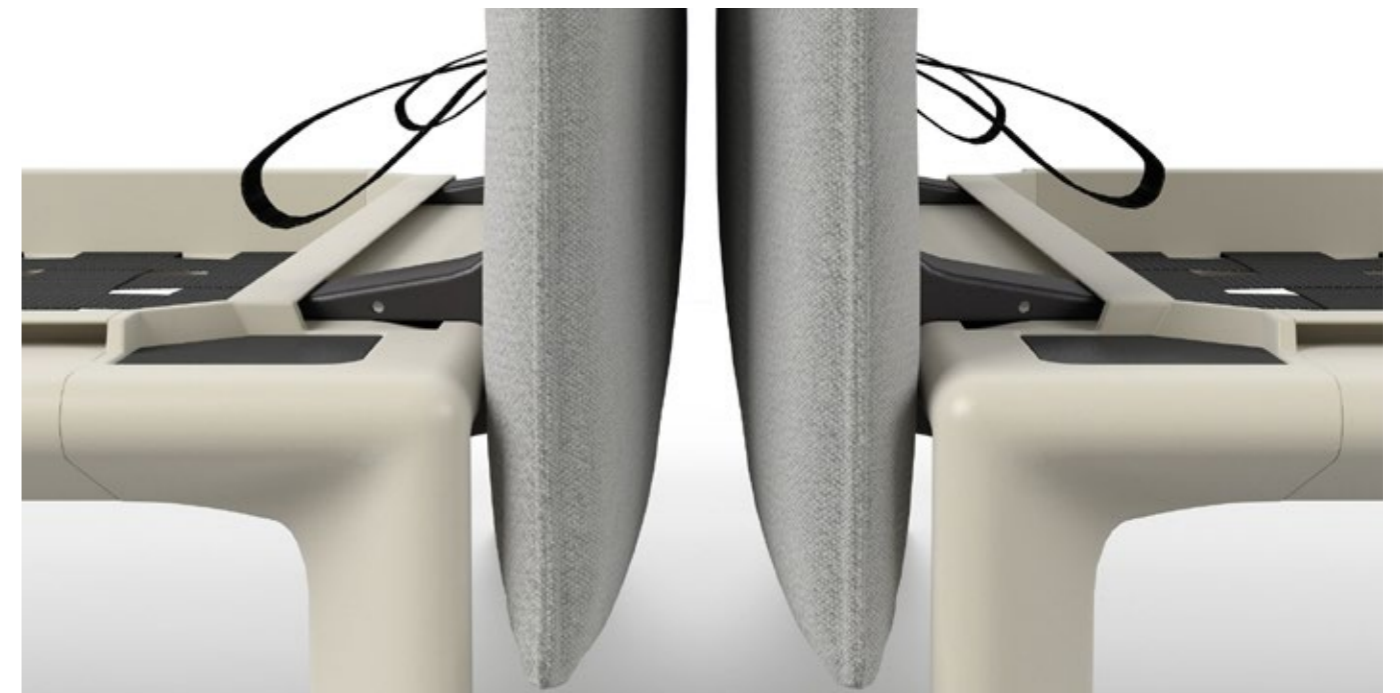
Two platforms with seat cushions can be attached together using platform connectors. Two platform connectors are always required per link.



If a panel is inserted between two platforms, connectors cannot be used to link the platforms together. Pushing the platforms directly against each other can leave lasting indentations in the upholstered panel. The platforms should therefore always be positioned slightly apart.



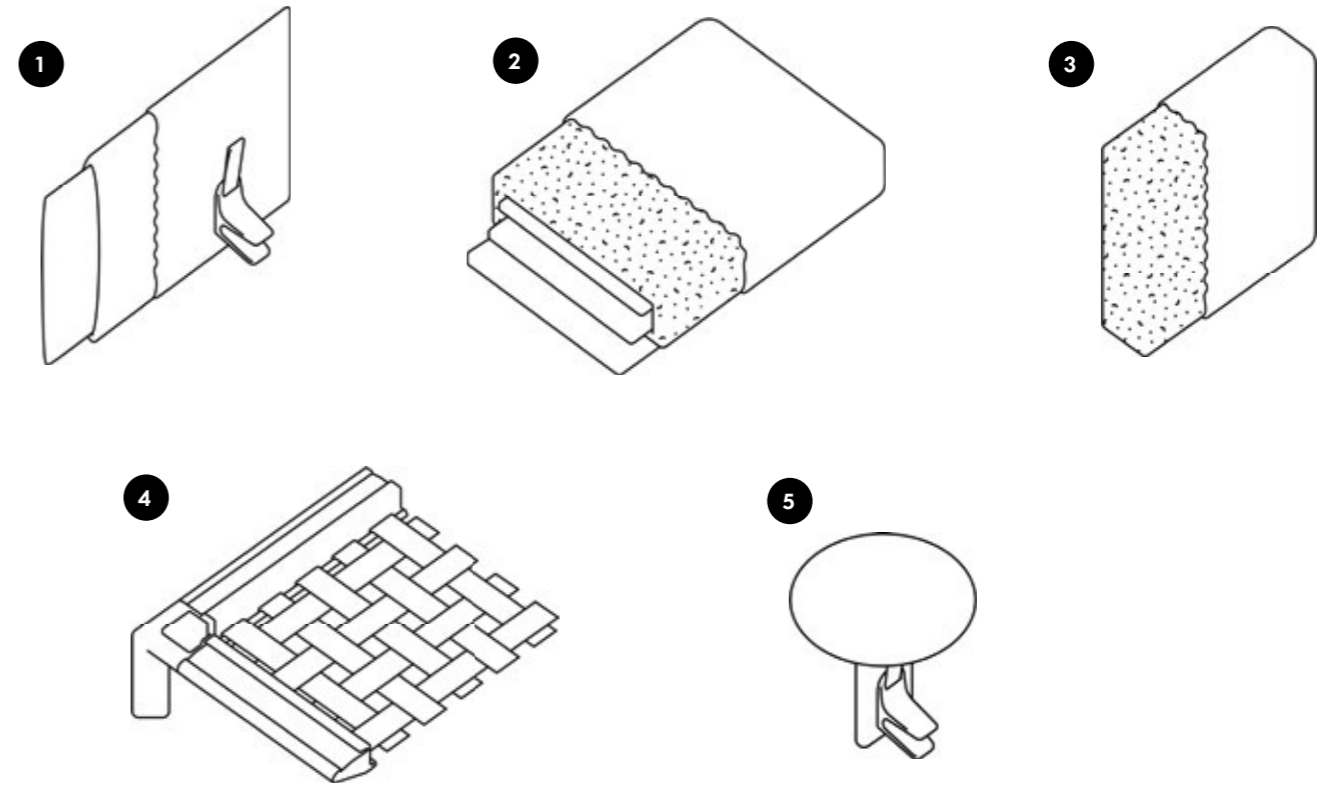
If an attachable table is inserted between two platforms, the wider distance results in a gap between the seat cushions and connectors cannot be used to link the platforms together. Pushing the platforms directly against each other can leave marks in the wood of the table. The platforms should therefore always be positioned slightly apart.



If two platforms with side panels are positioned side by side, the gap between the platforms is around 10 cm and connectors cannot be used to link them together. Pushing the platforms directly against each other can leave lasting indentations in the upholstered panels. In this configuration always position the platforms so that there is a slight gap between the side panels.



## Upholstery structure



- 1 Panels** Recyclable biofibre board padded with polyester wadding. Mounting bracket made of recycled polyamide with release strap
- 2 Seat cushion** Polyurethane foam core in separate pockets with chamber cushion overlay (filling 100% recycled PET fibres with components from post-industrial and post-consumer waste)
- 3 Back cushions** Chamber cushion filling 100% recycled PET fibres with components from post-industrial and post-consumer waste.
- 4 Body and legs** Webbed frame made of 80% recycled aluminium, powder-coated finish
- 5 Attachable table** Made from solid wood

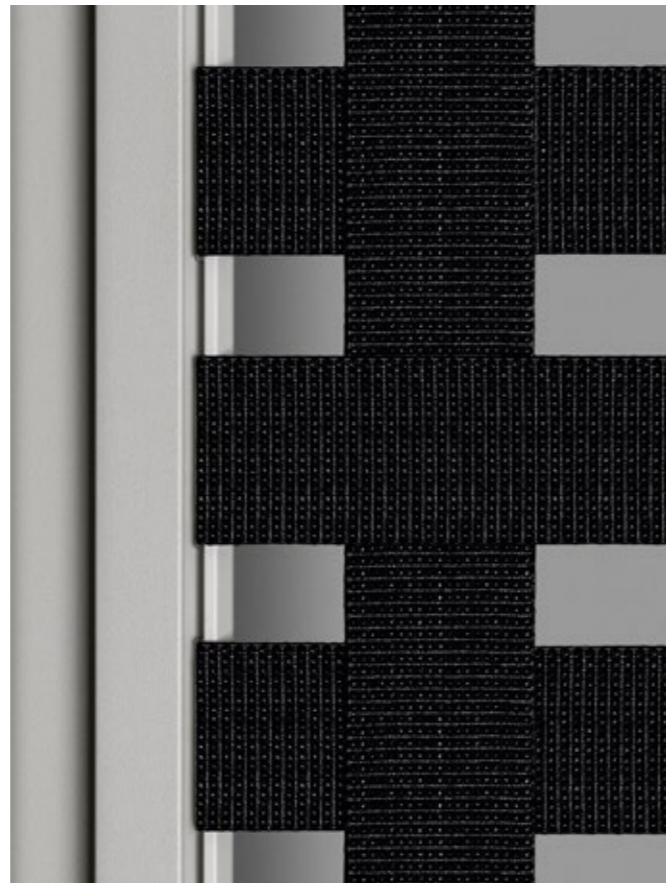


## Body and legs



Webbed frame made of 80% recycled aluminium, powder-coated finish

The robust, lightweight Anagram frame is made of aluminium with 80% recycled content and, like all Anagram components, is separate from other materials – nothing is glued, laminated or foamed. This means that the individual components, which are manufactured from recycled materials wherever possible, can be easily separated at the end of the product's life and recycled again.



## Seat upholstery and back cushions



Polyurethane foam core in separate pockets with chamber cushion overlay

## Vegan cushion filling made of recycled PET fibres



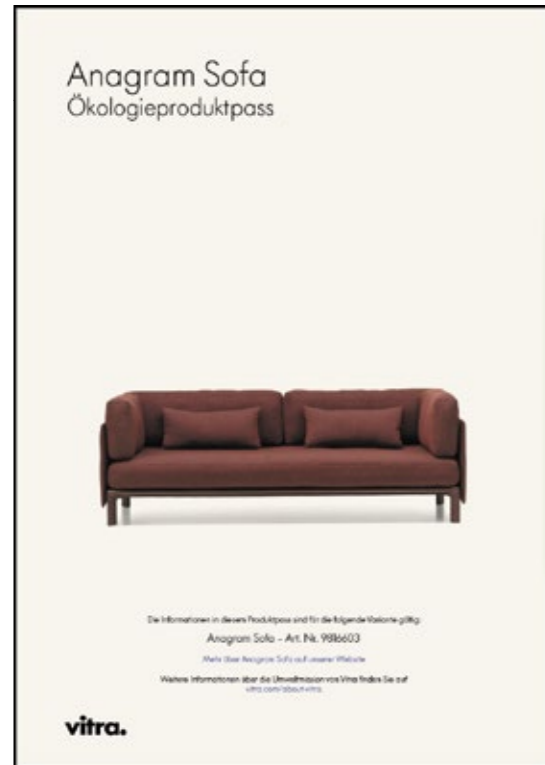
The softly comfortable and inviting cushions are filled with 100% recycled PET fibres that are separable and recyclable. Polyester fibres have very good elastic properties and offer pleasant comfort.



Recyclable biofibre board padded with polyester wadding. Mounting bracket made of recycled polyamide with release strap.



All the individual components of the Anagram Sofa are designed so that they can be replaced in the event of maintenance. New cushion covers, glides, connecting elements and other spare parts can be reordered at any time – for a particularly long service life.



## Environmental Product Passport

The Environmental Product Passport contains information about the product carbon footprint, recycling, material composition, packaging & logistics, the supply chain and available product certificates. If you have any questions about the Environmental Product Passport or other queries about sustainability, please feel free to contact us at [sustainability@vitra.com](mailto:sustainability@vitra.com)

## Vitra Product Warranty

Since 21 March, the Vitra Product Warranty now covers a broader range of Vitra furniture products, ensuring consistent and transparent customer benefits.

Designed and manufactured for longevity, Vitra products are backed by a quality promise guiding every aspect of their development and production. Registered products qualify for either a 10- or 30-year warranty, unlocking various benefits including product identification, origin tracing, and access to designer information and care instructions. This warranty reflects Vitra's commitment to sustainability.

Full terms and conditions are available [here](#) for review. For USA & Canada, [specific conditions](#) apply.

The Anagram Sofa is eligible for a 10-year warranty under the Vitra Product Warranty when registered through <https://my.vitra.com> for private use.

Available from October 2024

# Certificates

To offer transparency with regard to a product's most important environmental factors, Vitra provides certificates from external testing institutes. For this purpose, Vitra focuses on a selection of certificates that explicitly cover key elements of the respective product.

## Greenguard

The GREENGUARD label for indoor air quality recognises products that contribute to the creation of healthier indoor environments.



## GS

With the GS seal for tested safety, a state-authorized inspection institute certifies the suitability and safety of the construction and monitors production at regular intervals.



## BIFMA

Anagram fulfils the ANSI/BIFMA standard X5.1-2011, thus meeting the stringent safety requirements for the US market.



## EPD

An EPD – environmental product declaration – provides transparency about the environmental impacts of a product throughout its life cycle, often referred to as life cycle assessment (LCA).



Sink in & relax

Sink in & relax

**vitra.**

The Anagram Sofa offers pleasant comfort whether for sitting, lounging or enjoying a cosy nap. The seat cushions are softly padded for an indulgent sink-in sensation, creating an irresistible feeling of relaxation.

## Vitra Cushions

Vitra Cushions encompass a range of cushions and bolsters in 9 different sizes.

The cushions measuring 65 x 55 cm and 65 x 30 cm were developed specially for Anagram. They can be used to adjust the seat depth or add colour accents.

Whether for lumbar support or purely decorative purposes, the cushions pictured below can provide added comfort as well as further colour highlights.

Additional information and inspiration can be found at [vitra.com/vitracushions](https://vitra.com/vitracushions)



Vitra Cushion 65 x 55 cm



Vitra Cushion 65 x 30 cm

### Decorative and support cushions



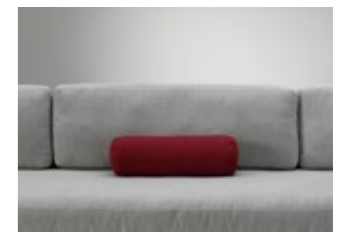
Vitra Cushion 50 x 50 cm



Vitra Cushion 40 x 40 cm



Vitra Cushion 40 x 30 cm



Vitra Cushion 54 x Ø 16 cm

### Cushion covers

Vitra Cushions are available in Vitra's entire range of upholstery fabrics and colours.

#### Heavy use:

Cosy 2  
Credo  
Laser RE  
Track  
Tress  
Volo

#### Medium use:

Cento  
Corsaro  
Dumet  
Hola  
Iroko 2  
Nubia  
Reed

#### Residential use:

Linho  
Savana



# Function and use of Vitra Cushions

## Lumbar support for sitting



Lounging with lumbar support: one 65 x 55 cm cushion



Upright sitting: one 65 x 55 cm cushion and one 65 x 30 cm cushion



Lounging with lumbar support:  
one 65 x 30 cm cushion

## Pillow cushions for lying down



Simple pillow: one 65 x 55 cm cushion



Additional neck support:  
one 65 x 55 cm cushion and one 65 x 30 cm cushion

## Corner cushions for sofa and chaise longue



Simple support: one 65 x 55 cm cushion



Double support: two 65 x 55 cm cushions



Double support with additional neck cushion: two 65 x 55 cm  
cushions and one 65 x 30 cm cushion



Double support with additional decorative and support  
cushions: two 65 x 55 cm cushions and one 50 x 50 cm cushion  
and one 40 x 40 cm cushion

## Armrest cushion



Additional armrest cushion for use with armrest bolster:  
one 65 x 30 cm cushion



Armrest cushion for use without armrest bolster: one 65 x 30 cm  
cushion

# Function and use of Vitra Cushions

## Other decorative and support cushions



Decorative and support cushions: one 50 x 50 cm cushion, cushion height matches that of backrest upholstery



Decorative and support cushions: one 40 x 40 cm cushion, cushion height slightly lower than backrest upholstery



Decorative and support cushions: one 30 x 40 cm cushion, can be used as extra lumbar support in combination with other cushions



Armrest or bolster, 54 x Ø 16 cm

# Vitra Cushions: filling



All covers are removable.



The filling contains zero animal-based elements, such as down or feathers, and consists only of either recycled PET fibres or recycled polyester, which can be separated according to material at the end of the cushions' lifespan and are both 100% recyclable.

The cushions in the sizes 80 x 60 cm, 60 x 60 cm, 60 x 40 cm and 54 x Ø 16 cm provide supportive comfort and are filled with 100% recycled PET fibres.



The cushions measuring 40 x 40 cm, 50 x 50 cm, 65 x 55 cm, 40 x 30 cm and 65 x 30 cm offer soft comfort and are filled with 100% recycled polyester made of post-consumer waste.









Colours and materials



## Colours and materials



### Materials

- **Legs:** recycled aluminium, powder-coated.
- **Body:** webbed aluminium frame.
- **Backrest cushions:** filling 100% recycled PET fibres with components from post-industrial and post-consumer waste.
- **Seat cushion:** polyurethane foam core in separate pockets with chamber cushion overlay (filling 100% recycled PET fibres with components from post-industrial and post-consumer waste).
- **Seat height:** 415 mm (325 mm with applied load, measured in accordance with EN 1335-1:2000).
- **Platform connectors:** recycled polyamide. At least two platform connectors are required to attach two platforms together.
- **Panels:** integrated biofibre board, polyester fibre and cover.
- **Mounting bracket with tension strap for panels and attachable tables:** bracket made of recycled polyamide, tension strap in polyester.
- **Attachable tables in solid wood:** natural oak, ash with black lacquer finish or ash with oiled finish in cotton white.
- **Origin of wood:** oak (*Quercus robur*) and ash (*Fraxinus excelsior*) from Western Europe and/or Poland.
- **Glides:** non-slip.

- **Covers:** removable. To avoid shrinkage or damage, covers should be professionally cleaned – do not put in the washing machine. A torque spanner is required to change panel covers or to install a new mounting bracket.
- **Note:** cushions should be regularly shaken and plumped to retain their fullness and shape. Ripples and indentations from sitting (pressure marks) and partially visible outlines of the chamber cushions are characteristic of high-quality, soft upholstery in combination with a removable cover and can be more or less pronounced, depending on the selected cover material.

## Useful facts about upholstery

Vitra has over fifty years of experience in the production of upholstered furniture. Premium materials, skilled craftsmanship and high quality standards at Vitra are a guarantee for long-lasting products. In Vitra's own test centre, our upholstered furnishings are regularly subjected to a wide range of tests that far exceed common standards.

### Care instructions:

Exposure to direct sunlight should be avoided whenever possible, since intensive radiation can cause cover materials to fade.

To retain the original fullness and shape of your sofa, cushions should be regularly shaken and plumped.

Folds and creases from sitting can be prevented in all types of upholstery by smoothing the cover material after use.

## Useful facts about cover materials

Covers have a decisive influence on the appearance and characteristics of upholstered furniture. Along with the type of material, weave and aesthetic features of the textile, a major role is played by technical properties such as resistance to abrasion, fading or stains.

Function and performance are primarily determined by the type of fabric used. In general, synthetic fibres are superior to natural fibres in terms of their technical characteristics. For this reason, blends of different materials are employed to combine the advantages of the individual fibres.

In the following, you will find some of the key features of the textiles used by Vitra in its upholstery covers:

### Cotton (CO)

Skin-friendly natural fibre of plant origin, comfortable to the touch, readily absorbs moisture. Often inferior to synthetic fibres with regard to colourfastness and light resistance, flat weaves susceptible to pilling.

### Linen (LI)

Natural fibre of plant origin with slight lustre, cool and comfortable, repels dirt, no pilling. Limited colourfastness to light and crocking, creases easily.

### Wool (WO)

Elastic natural fibre of animal origin, naturally self-cleaning – a brief airing disperses absorbed odours, leaving the wool smelling neutral and fresh again. Good resistance to light and abrasion, highly absorbent, minimal creasing, low flammability. Subject to pilling and matting.

### Polyester (PE), Polyacrylic (PA), Viscose (VI)

Synthetic, highly uniform, lightfast fibres. The non-absorbent properties of synthetics can be mitigated with fibre blends and weaving techniques.

The overall look of a piece of furniture is influenced by the colour and type of cover fabric, its properties (elastic or non-stretch) as well as the upholstery technique (removable or attached covers). Consequently, a sofa can take on a different appearance depending on the cover material. Generally speaking, cover fabrics with some elasticity are less susceptible to creases and puckering, since they have an adaptable fit on three-dimensional forms. Heavier cover materials such as Laser or Credo drape more smoothly while thinner materials exhibit a finer rippling effect.

### Care instructions:

All Anagram covers are removable. Fabric covers can be taken to a professional cleaner. Prior to treatment, please be sure to note the composition of the cover fabric and follow care instructions.

Should you ever need to replace individual parts or covers due to wear and tear, please contact your local Vitra retailer.



# Colours and materials

## Table top, solid wood



77  
cotton white ash, oiled



70  
natural solid oak, oiled finish



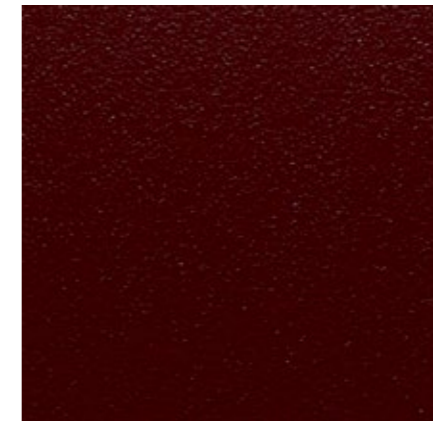
68  
black ash

Wood is characterised by variations in grain, texture and colour, making each wooden furnishing a unique object. Vitra has strict quality standards for the woods selected for its products and uses wood from several trees for the manufacture of a single furniture object made of solid wood. As a result, every piece has a lively and distinctive appearance. The solid woods used by Vitra are mainly sourced in Europe and have an oiled or lacquered finish, depending on their application. Exposure to light will alter the colour of wood over time.

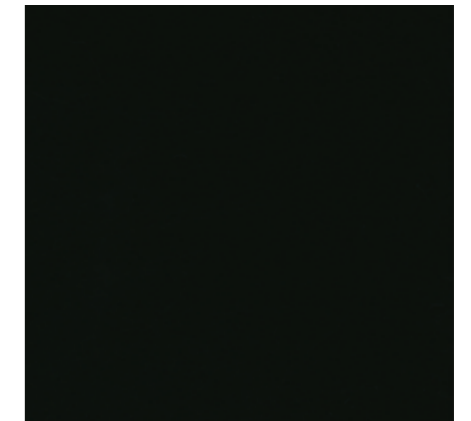
## Base, metal



37  
chalk powder-coated (textured)



60  
dark bordeaux powder-coated (textured)



30  
basic dark powder-coated (textured)

Vitra most frequently uses aluminium and steel for metal components. Since 94% less energy is required to produce recycled aluminium in comparison to primary aluminium, Vitra utilises aluminium consisting of 95% recycled material whenever possible. Depending on the product, metal surfaces are either powder-coated, chrome-plated, polished, galvanised or lacquered. A smooth or textured powder-coated finish provides colour and surface protection.

# Colour moods to match the shade of the frame

chalk, powder-coated (textured finish)



dark bordeaux, powder-coated (textured finish)



basic dark, powder-coated (textured finish)



## Upholstery fabrics

A selection of 10 fabrics is available for Anagram.

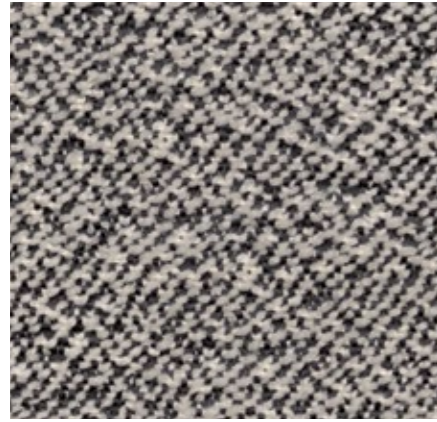
Details of the individual fabrics can be found on the following pages.

Heavy use:  
Laser RE - F 40  
Tress - F 80  
Credo - F 120

Medium use:  
Hola - F 40  
Dumet - F 80  
Iroko 2 - F 80  
Nubia - F 100  
Cento - F 120

Residential use:  
Linho - F 80  
Savana - F 80

## Cento Medium use, F120



Cento is made of 100% high-quality virgin wool. Its bouclé appearance and three-dimensional structure create a lively surface texture with a voluminous granular feel. Thanks to the sustainable purity of the wool, Cento has been granted the EU Ecolabel.

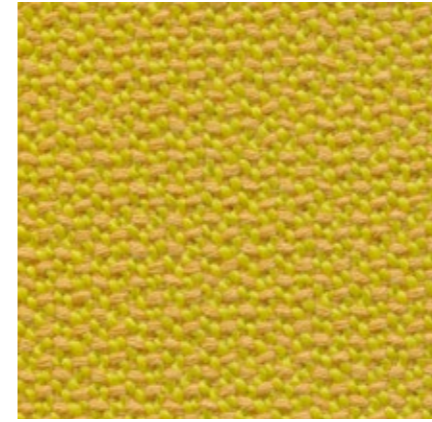
Cento is available in 14 colours.

Material	100% new wool
Weight	620 g/m <sup>2</sup> (18.3 oz/y <sup>2</sup> )
Width	147 cm +/- 2 cm (58")
Abrasion resistance	30,000 Martindale
Fastness to light	Type 5
Pilling	Grade 4-5
Fastness to rubbing	Grade 4 dry and wet

### Cento



## Credo Heavy use, F120



Credo is a durable woollen fabric made of premium worsted yarn with a pleasant feel. The two- and three-tone colours give this fabric a characteristic structure and vibrant appearance. Credo allows for an effective exchange of heat to ensure comfortable thermal conditions for the sitter. The fabric can also be used in office environments.

Credo is available in 22 colours.

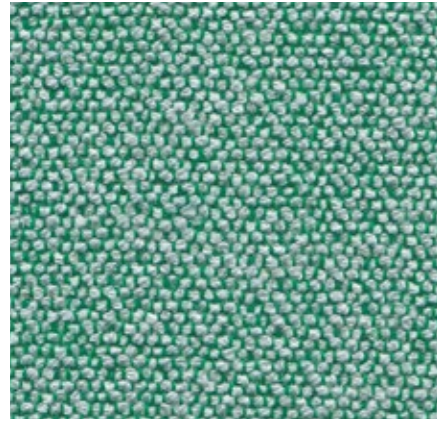
Material	5% polyamide, 95% new wool
Weight	640 g/m <sup>2</sup> (18.9 oz/y <sup>2</sup> )
Width	145 cm +/- 2 cm (57")
Abrasion resistance	100,000 Martindale
Fastness to light	Type 6
Pilling	Grade 4-5
Fastness to rubbing	Grade 4-5 dry and wet

### Credo





## Dumet Medium use, F80

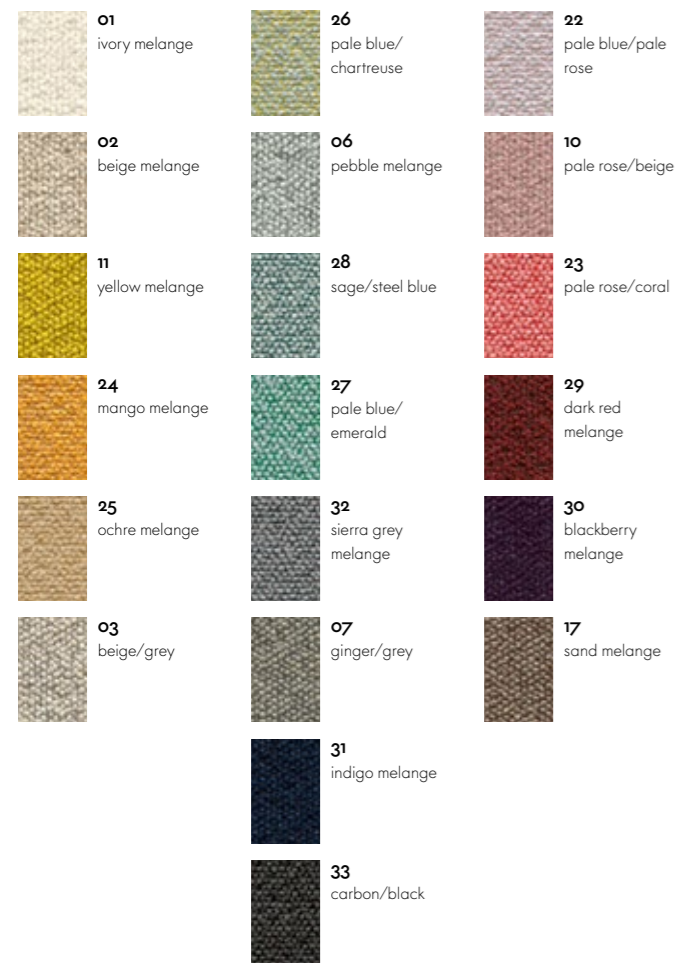


Dumet is a cotton blend in a plain weave with a lively appearance. The natural mixed tones create an elegant look with an Italian flair. Dumet is soft and cool to the touch.

Dumet is available in 20 colours.

Material	9% polyamide, 8% linen, 22% wool, 46% cotton, 15% rayon
Weight	485 g/m <sup>2</sup> (14.3 oz/y <sup>2</sup> )
Width	147 cm +/- 2 cm (58")
Abrasion resistance	40,000 Martindale
Fastness to light	Type 5
Pilling	Grade 3-4
Fastness to rubbing	Grade 3-4 dry and wet

### Dumet



## Hola Medium use, F40

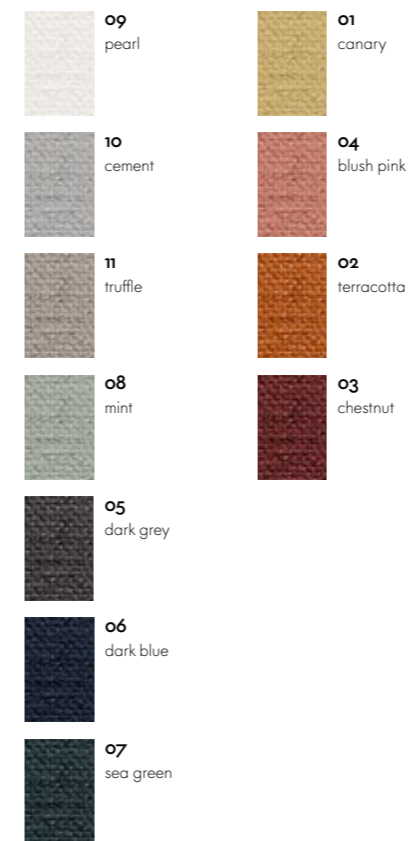


Hola is a textile made from 100% recycled polyester. Its finely textured threads are woven into a soft comfortable fabric with an understated expression and almost cotton-like feel. It is simultaneously also resilient enough to be used in semi-public spaces such as hotel lobbies. Hola is Oeko-tex-certified and manufactured using a dyeing process with a closed water cycle.

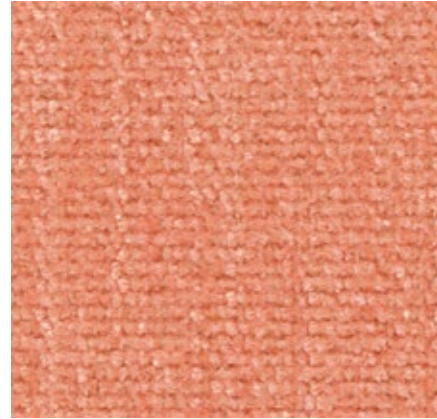
Hola is available in 11 colours.

Material	100% recycled polyester
Weight	470 g/m <sup>2</sup> (13.9 oz/y <sup>2</sup> )
Width	142 cm +/- 2 cm (56")
Abrasion resistance	60,000 Martindale
Fastness to light	Type 5
Pilling	Grade 4-5
Fastness to rubbing	Grade 4-5 dry and wet

### Hola



## Iroko 2 Medium use, F80



Iroko 2 is a soft, flat woven fabric made with chenille yarn. The piles in the yarn give the weave a lively surface texture with an inviting, velvety touch. The fabric's cotton fibres provide excellent cooling properties.

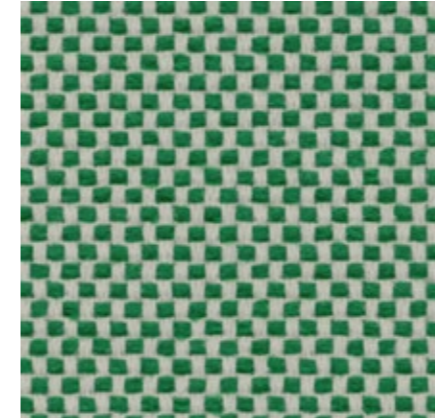
Iroko 2 is available in 17 colours.

Material	48% polyacrylics, 20% polyester, 32% cotton
Weight	700 g/m <sup>2</sup> (20.6 oz/y <sup>2</sup> )
Width	152 cm +/- 3 cm (60")
Abrasion resistance	40,000 Martindale
Fastness to light	Type 5
Pilling	Grade 3-4
Fastness to rubbing	Grade 3-4 dry and wet

### Iroko 2



## Laser RE Heavy use, F40



The environmentally friendly fabric Laser RE is made from recycled polyester. It has a distinctive woven appearance, which is particularly accentuated by contrasting duotones in a varied palette of 25 colours. Practical and easy to care for, as well as durable and highly abrasion-resistant, Laser RE is also well suited for office environments.

Laser RE is available in 25 colours.

Material	100% recycled polyester
Weight	520 g/m <sup>2</sup> (15.3 oz/y <sup>2</sup> )
Width	144 cm +/- 2 cm (57")
Abrasion resistance	100,000 Martindale
Fastness to light	Type 6
Pilling	Grade 4-5
Fastness to rubbing	Grade 4-5 dry and wet

### Laser RE



## Linho Residential use, F80



The high-quality linen fabric Linho is manufactured in Belgium, from the plant to the finished textile. It has the slightly irregular appearance that is typical of linen yarn. The fabric is cool and dry to the touch, with natural earthy tones that exhibit a Mediterranean flair. Due to its high percentage of linen, Linho tends to form elegant creases, lending a natural look to soft upholstered furniture.

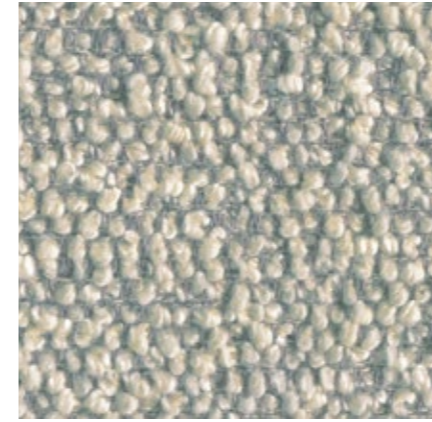
Linho is available in 10 colours.

Material	9% polyamide, 91% linen
Weight	450 g/m <sup>2</sup> (13.3 oz/y <sup>2</sup> )
Width	137 cm +/- 2 cm (54")
Abrasion resistance	18,000 Martindale
Fastness to light	Type 5
Pilling	Grade 3
Fastness to rubbing	Grade 3 dry and wet

### Linho



## Nubia Medium use, F100

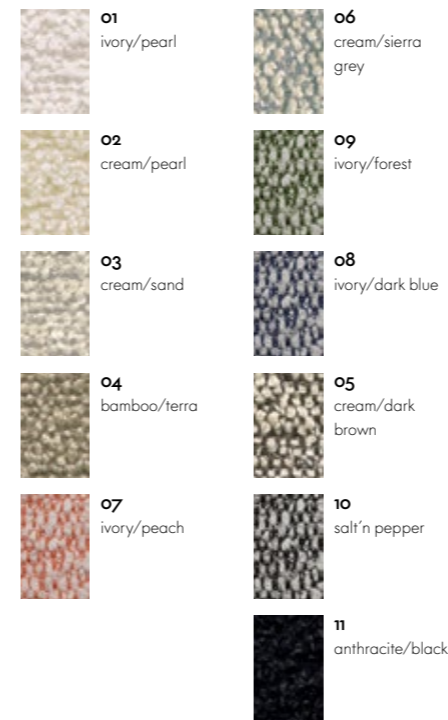


Nubia is a blended fabric with a very lively, natural appearance. Its fine sub-structure is interspersed with voluminous bouclé yarn, which gives the fabric depth and a soft, inviting touch. The varying combinations of yarns yield either contrasting or calm colour compositions with a distinctly Mediterranean flair.

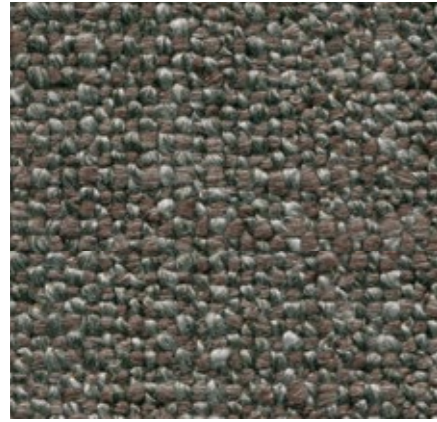
Nubia is available in 11 colours.

Material	2% polyamide, 30% new wool, 25% polyacrylics, 43% polyester
Weight	570 g/m <sup>2</sup> (16.8 oz/y <sup>2</sup> )
Width	140 cm (55")
Abrasion resistance	35,000 Martindale
Fastness to light	Type 5
Pilling	Grade 4
Fastness to rubbing	Grade 3-4 dry and wet

### Nubia



## Savana Residential use, F80



Savana is a blended fabric woven from yarns of varying thickness, which give it an irregular texture with a lively and elegant appearance. A palette of subdued and natural earth tones, along with the dry, pleasant feel of the textile, emphasise the fabric's Italian flair.

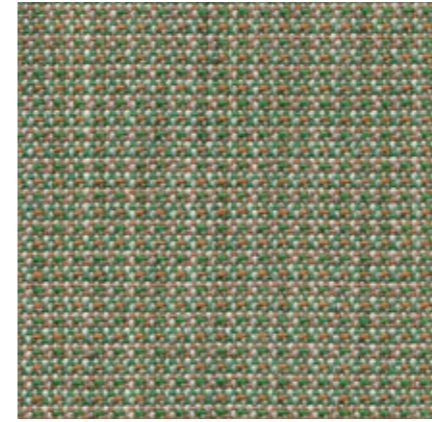
Savana is available in 8 colours.

Material	8% polyamide, 50% polyacrylics, 23% linen, 19% cotton
Weight	820 g/m <sup>2</sup> (24.2 oz/y <sup>2</sup> )
Width	140 cm (55")
Abrasion resistance	30,000 Martindale
Fastness to light	Type 5
Pilling	Grade 3-4
Fastness to rubbing	Grade 3-4 dry and wet

### Savana



## Tress Heavy use, F80

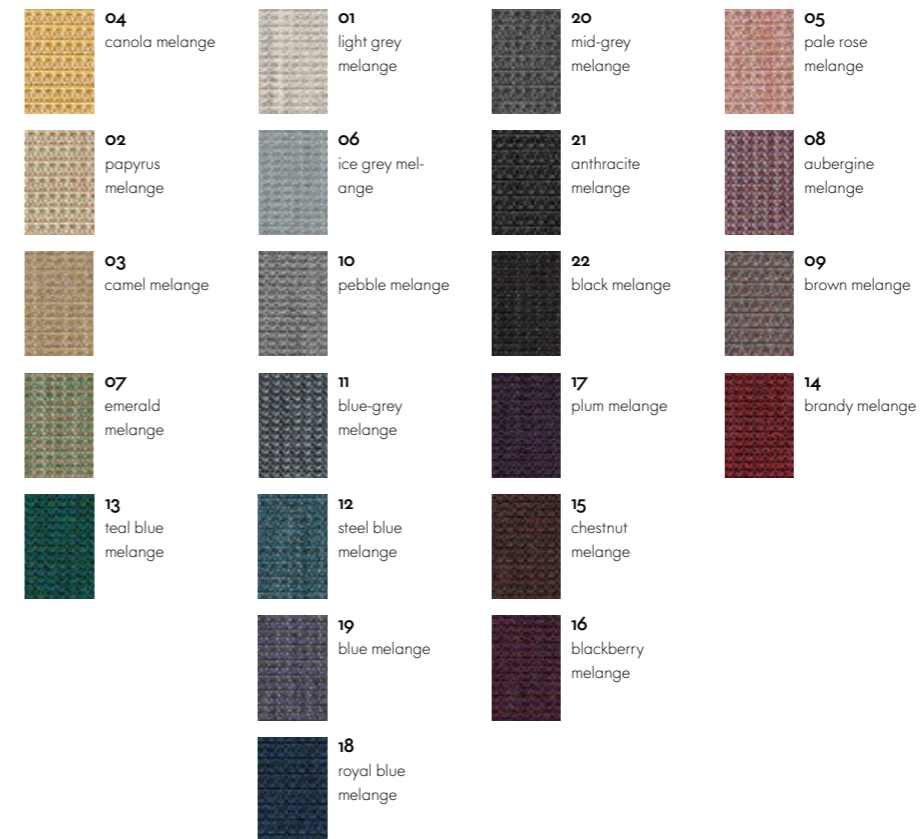


Tress is a flat woven fabric with a lively appearance that derives from the contrast between its even structure and the natural melange of colours. The combination of yarns with varied hues creates a harmonious and yet vibrant look. Thanks to its high wool content, Tress is a durable, easy-care material with a home-like aesthetic.

Tress is available in 22 colours.

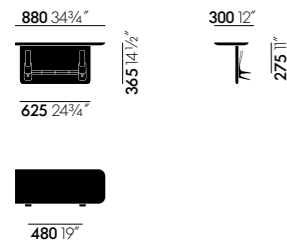
Material	8% polyamide, 73% new wool, 19% polyester
Weight	310 g/m <sup>2</sup> (9.1 oz/y <sup>2</sup> )
Width	142 cm +/- 2 cm (56")
Abrasion resistance	40,000 Martindale
Fastness to light	Type 6
Pilling	Grade 4-5
Fastness to rubbing	Grade 4-5 dry and wet

### Tress

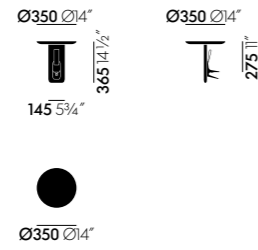


# Dimensions

(in accordance with EN 1335-1:2000)



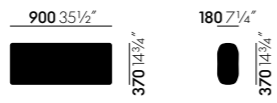
Anagram attachable table 300 x 900



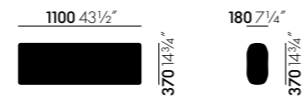
Anagram attachable table Ø 350



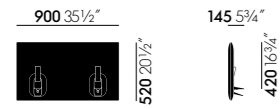
Anagram back cushion 700



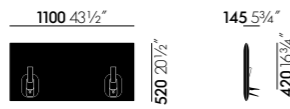
Anagram back cushion 900



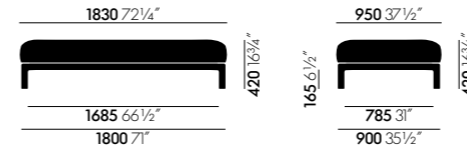
Anagram back cushion 1100



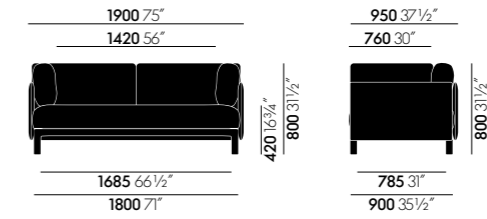
Anagram panel 900



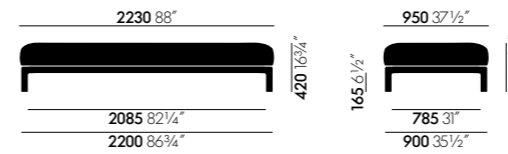
Anagram panel 1100



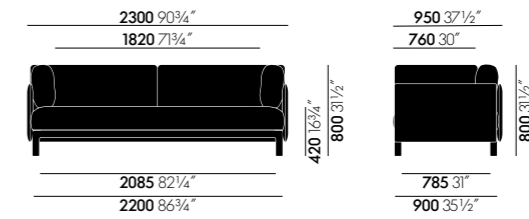
Anagram platform 900 x 1800



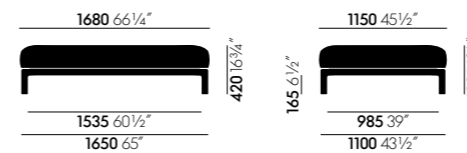
Anagram platform 900 x 1800 with panels and back cushions



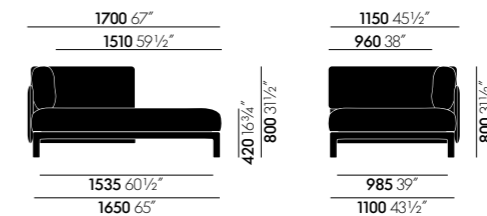
Anagram platform 900 x 2200



Anagram platform 900 x 2200 with panels and back cushions



Anagram platform 1100 x 1650



Anagram platform 1100 x 1650 with panels and back cushions

